

GPC S24 PORTABLE COMPACTOR

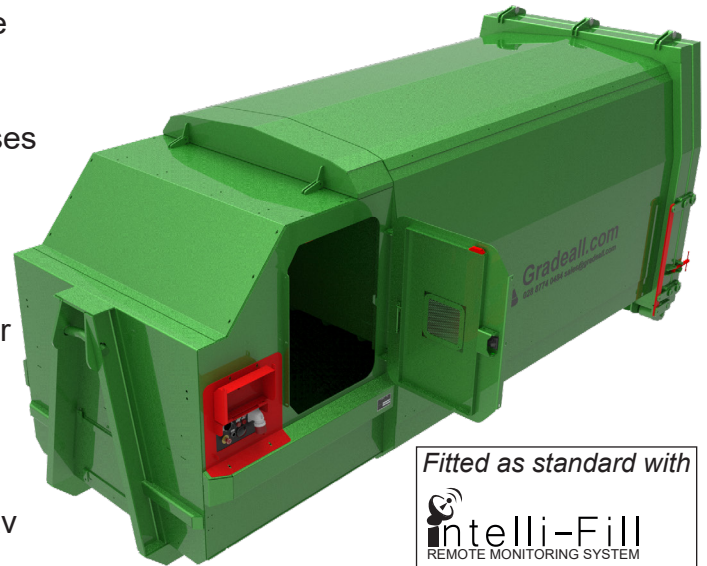
ENGINEERING SOLUTIONS FOR THE WASTE & RECYCLING INDUSTRIES

The Gradeall GPC S24 is a large hook lift portable waste compactor. It is suitable for a variety of waste types including cardboard, paper, wood, and general waste to name a few. This makes the GPC S24 ideal for businesses or organisations that need a reliable way of compacting waste materials.

This compactor uses two rams mounted in a scissor arrangement to push forward a compacting head in order to compress materials into the internal container area.

The GPC S24 offers the option of one or two manual material entry doors, or can be fitted with a bin lift to lift up to 1100 litre wheelie bins. Other options such as Dolav pallet box lifter are also available.

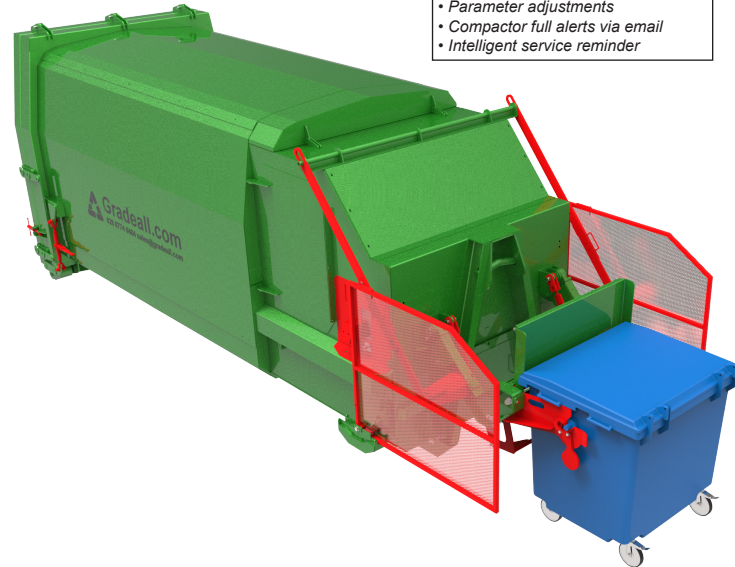
- Can be used on a variety of waste types.
- Controls available on either side.
- Manual load or bin lift versions available.
- Intelli-Fill wireless connectivity with remote monitoring and diagnostics.
- CHEM compliant.



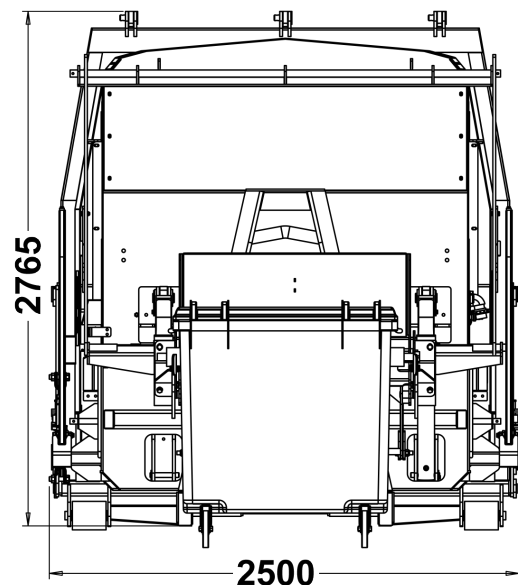
Fitted as standard with

Intelli-Fill
REMOTE MONITORING SYSTEM

- Remote monitoring & diagnostics
- Parameter adjustments
- Compactor full alerts via email
- Intelligent service reminder



Model	GPC S24
Total capacity (m³)	24
Container capacity (m³)	20
Charge box capacity (m³)	4
Power supply	415v 3 Phase
Motor size (Kw)	5.5
Machine weight (Kg)	5650
Cycle time (Seconds)	30
Maximum system pressure (Bar)	200
Ram bore (mm)	90
Ram stroke (mm)	850
Force per ram (Tonne)	12.5
Total force delivered (Tonne)	25
Compaction face area (m²)	1.07
Compaction head stroke (m)	1.25
Compaction head swept volume (m³)	1.33
Maximum head face pressure (Tonne/m²)	23.8
Bin lift lid opening (mm)	1820 x 1360
Side door load opening (mm)	850 x 1200

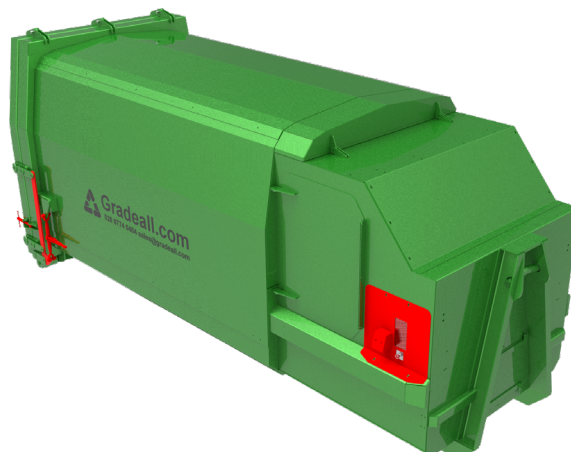
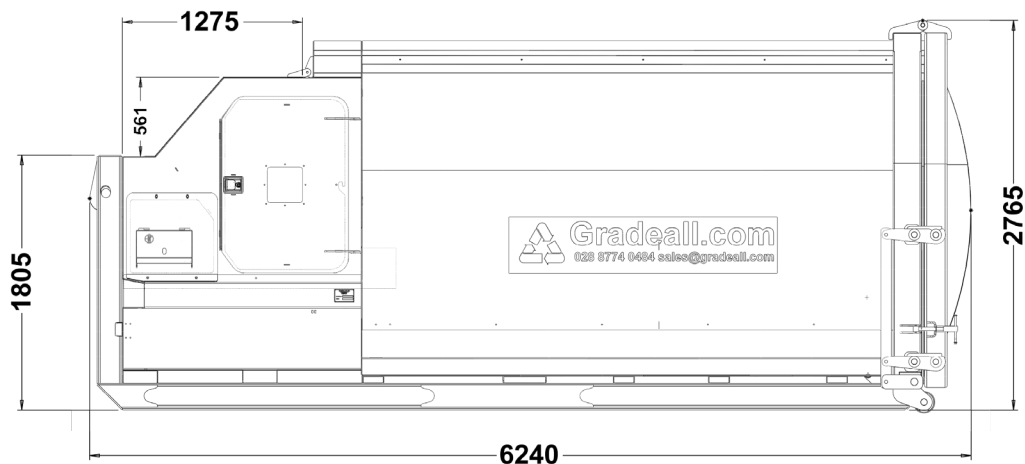
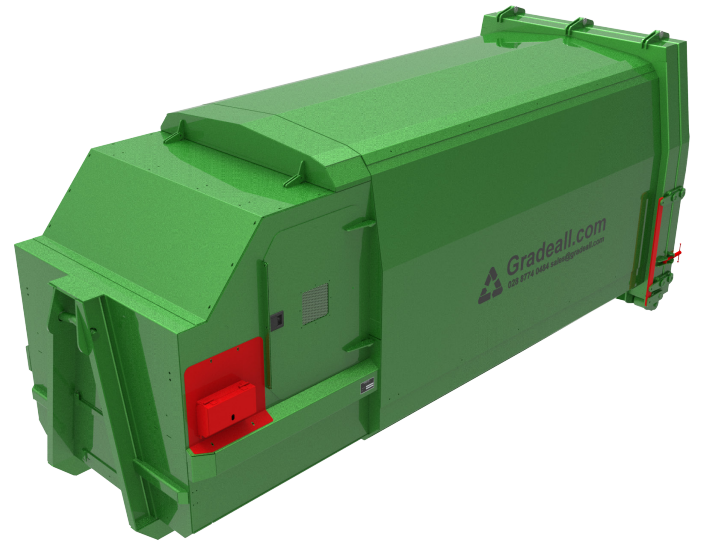
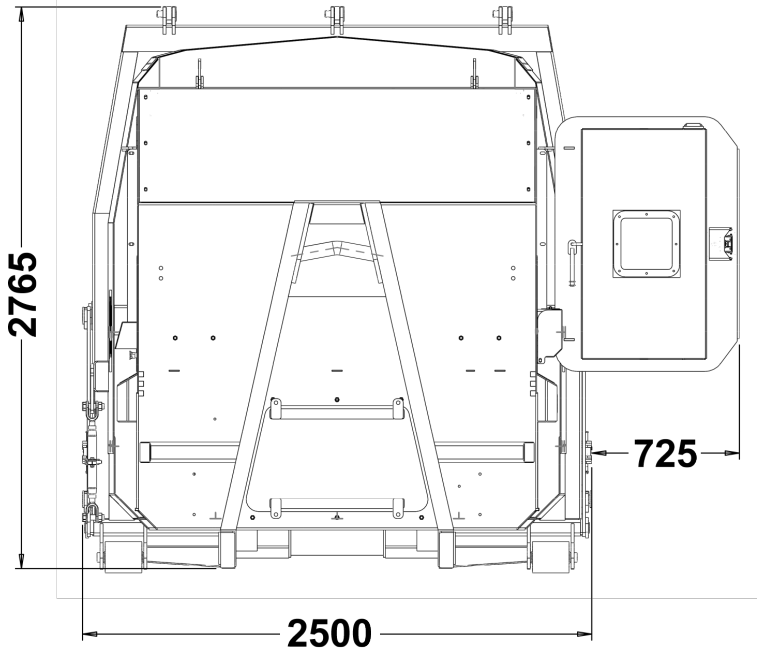


GPC S24 PORTABLE COMPACTOR




ENGINEERING SOLUTIONS FOR THE WASTE & RECYCLING INDUSTRIES

Dimensions of GPC S24 Manual load



 Gradeall International Limited
9 Farlough Road,
Dungannon, County Tyrone
Northern Ireland
BT71 4DT

 Tel: +44 (0)28 8774 0484
Fax: +44 (0)28 8774 8823
Email: sales@gradeall.com
Stephen: +44 7703 529 008
Alan: +44 7435 764 008

 www.gradeall.com

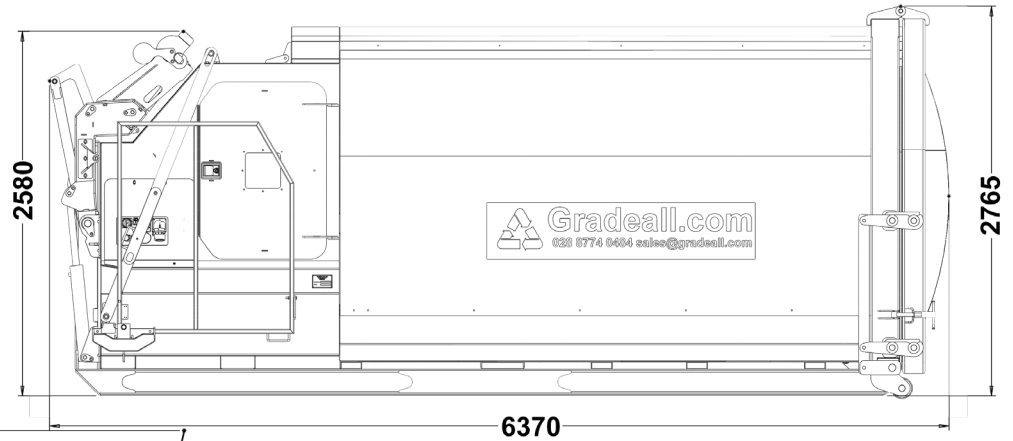


GPC S24 PORTABLE COMPACTOR

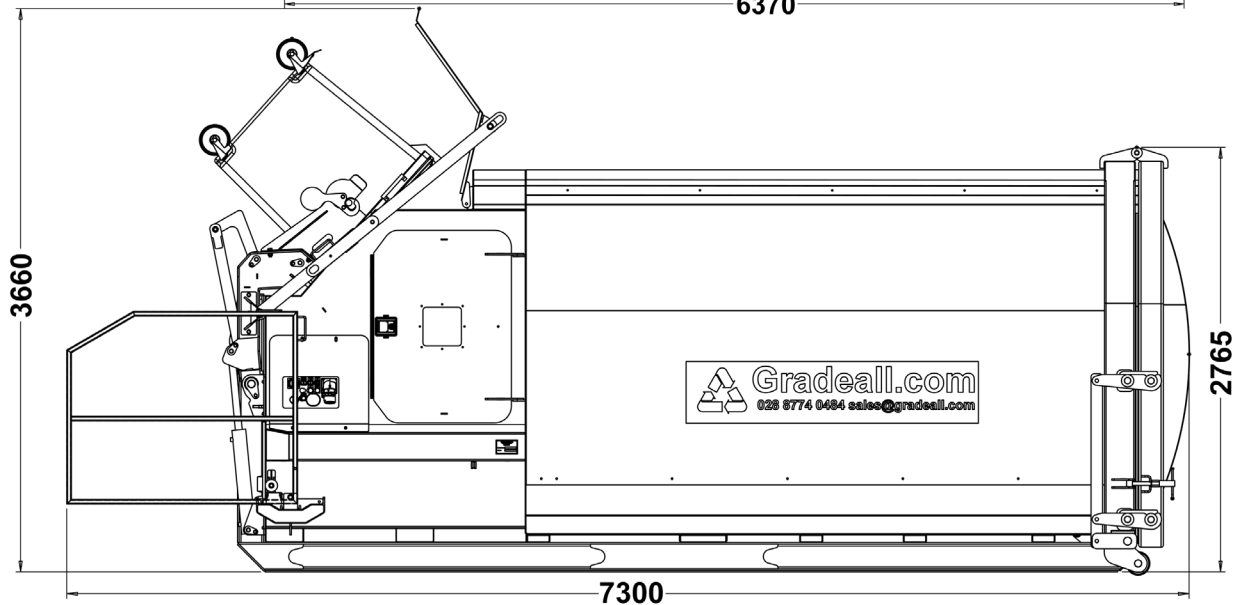
ENGINEERING SOLUTIONS FOR THE WASTE & RECYCLING INDUSTRIES

Dimensions of GPC S24 with Bin Lift

GPC S24
Bin Lift
Transport Position



GPC S24
Bin Lift
Bin Lift Up



GPC S24
Bin Lift
Bin Lift Down

